

Gloucester Terrace, W2 3HB

£2,600 PCM



A spacious and bright one-bedroom flat, fully refurbished to a high standard and furnished with brand-new furniture.

The property features large windows, high ceilings, and wooden flooring throughout, creating a stylish and airy living space. An additional utility/office room provides flexible space ideal for working from home or extra storage.

Ideally located just a 5-minute walk from Paddington Station (Elizabeth Line) and only a 7-minute walk to Hyde Park, the flat offers excellent transport links and easy access to one of London's most beautiful green spaces.

Gloucester Terrace, London, W2

Approximate Gross Internal Floor Area = 62.2 sq m / 671 sq ft

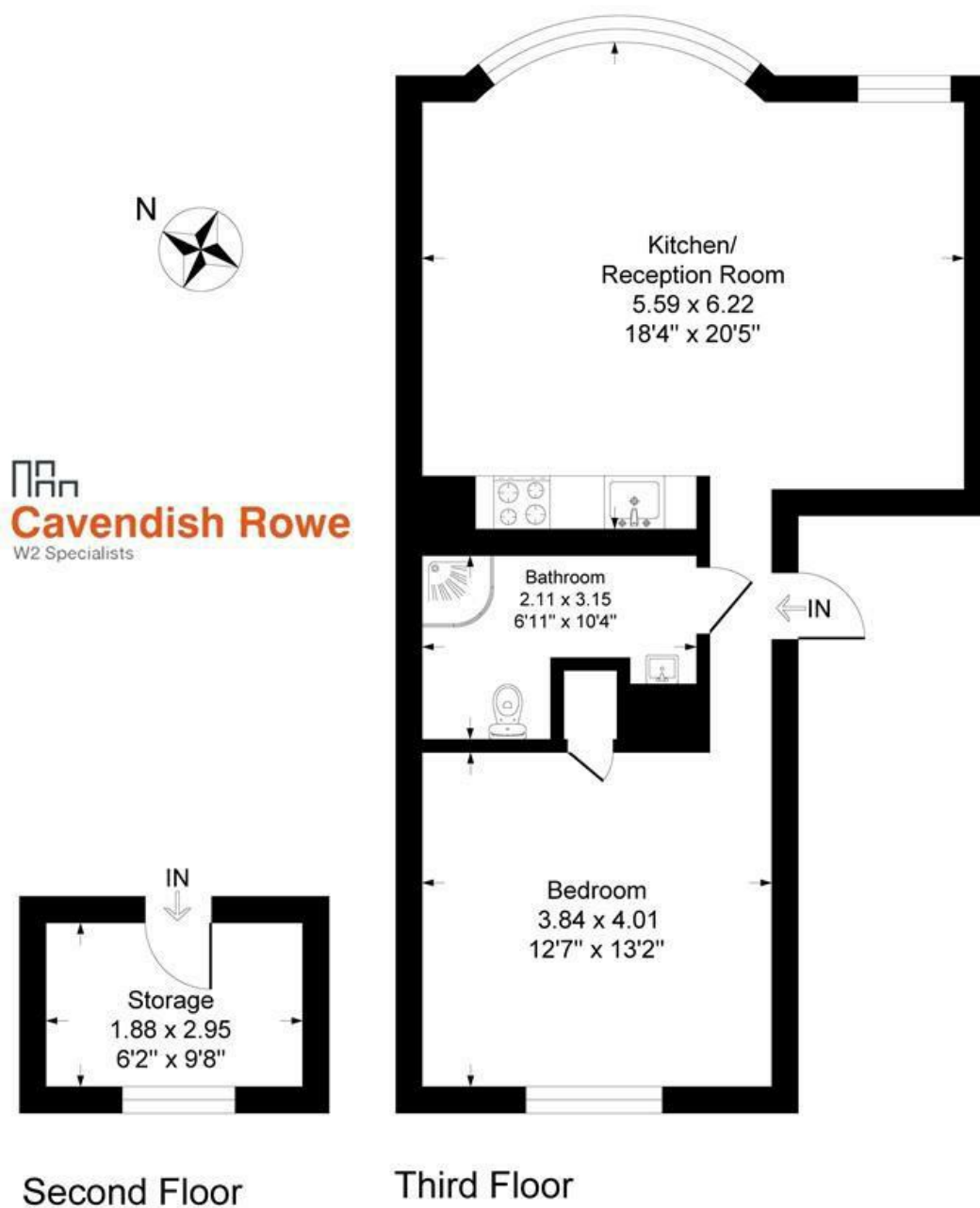


Illustration for identification purposes only, measurements are approximate, not to scale.

Energy Efficiency Rating		Current	Potential
Very energy efficient - lower running costs			
(92 plus) A			
(81-91) B			82
(69-80) C		74	
(55-68) D			
(39-54) E			
(21-38) F			
(1-20) G			
Not energy efficient - higher running costs			
England & Wales		EU Directive 2002/91/EC	

Environmental Impact (CO ₂) Rating		Current	Potential
Very environmentally friendly - lower CO ₂ emissions			
(92 plus) A			
(81-91) B			
(69-80) C			
(55-68) D			
(39-54) E			
(21-38) F			
(1-20) G			
Not environmentally friendly - higher CO ₂ emissions			
England & Wales		EU Directive 2002/91/EC	